

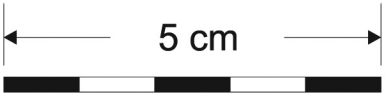
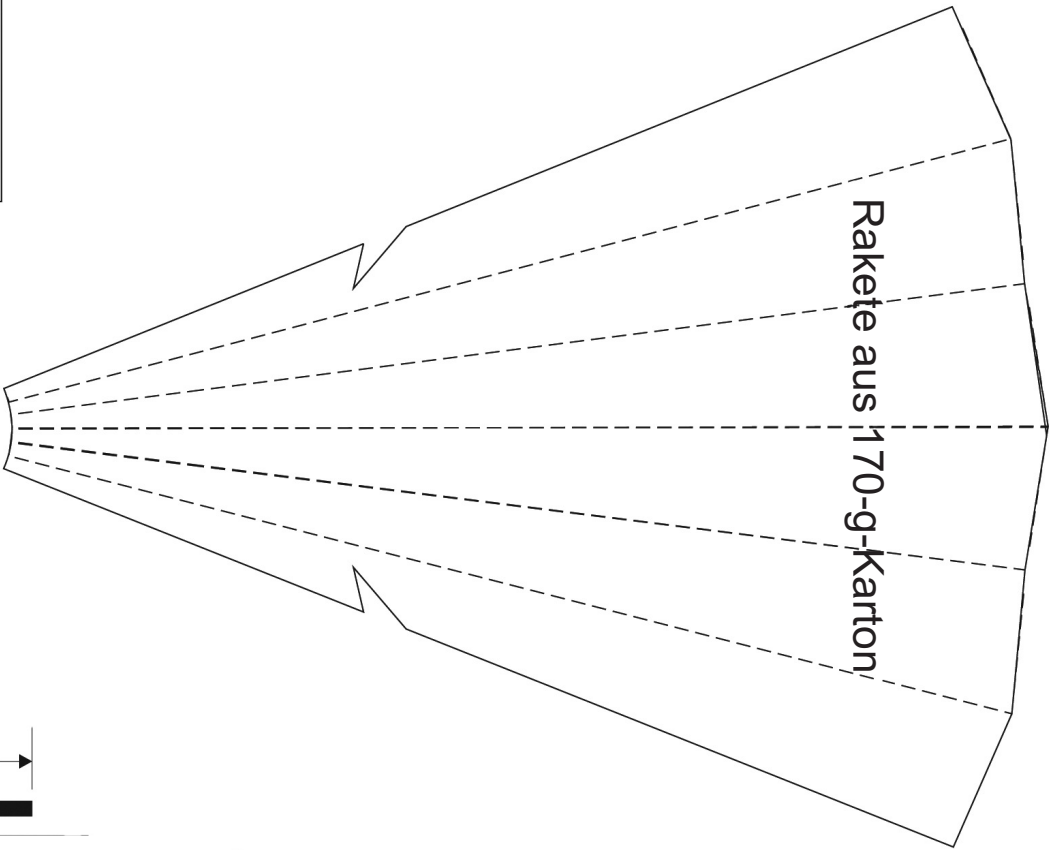
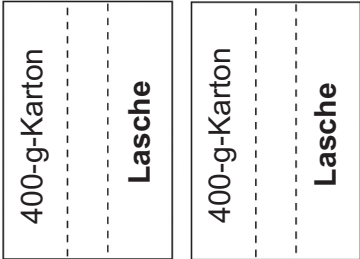
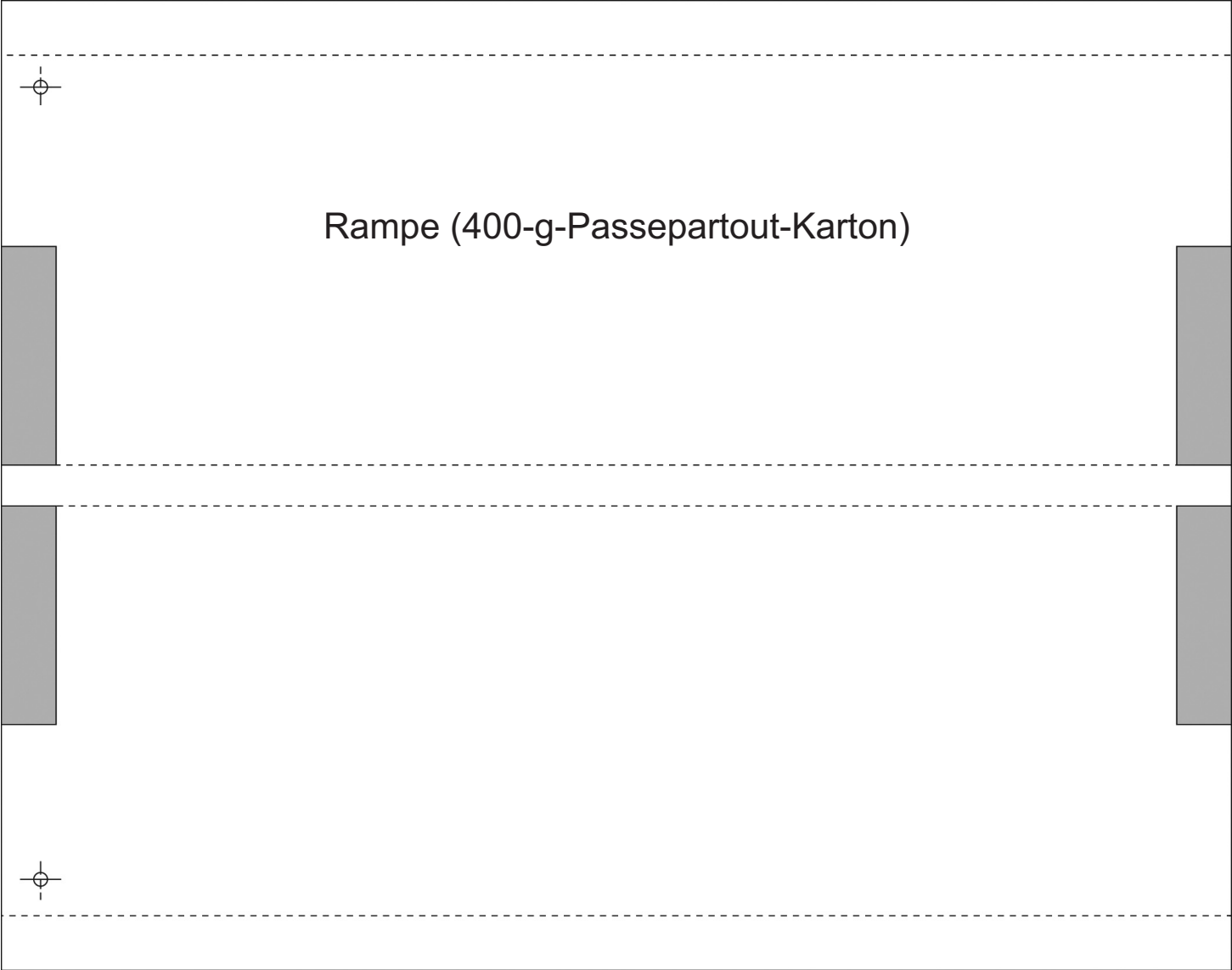
Uwe Wandrey

Baupläne: Werkstatt  
**Raketen und Flieger**

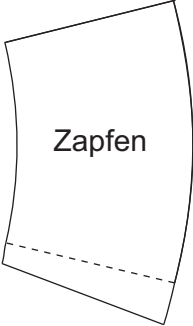
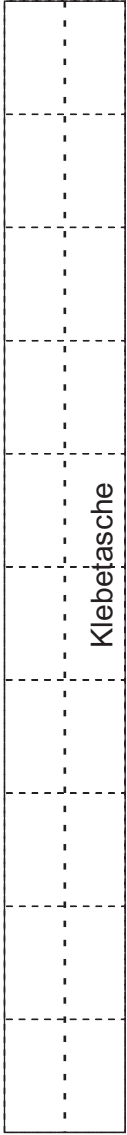
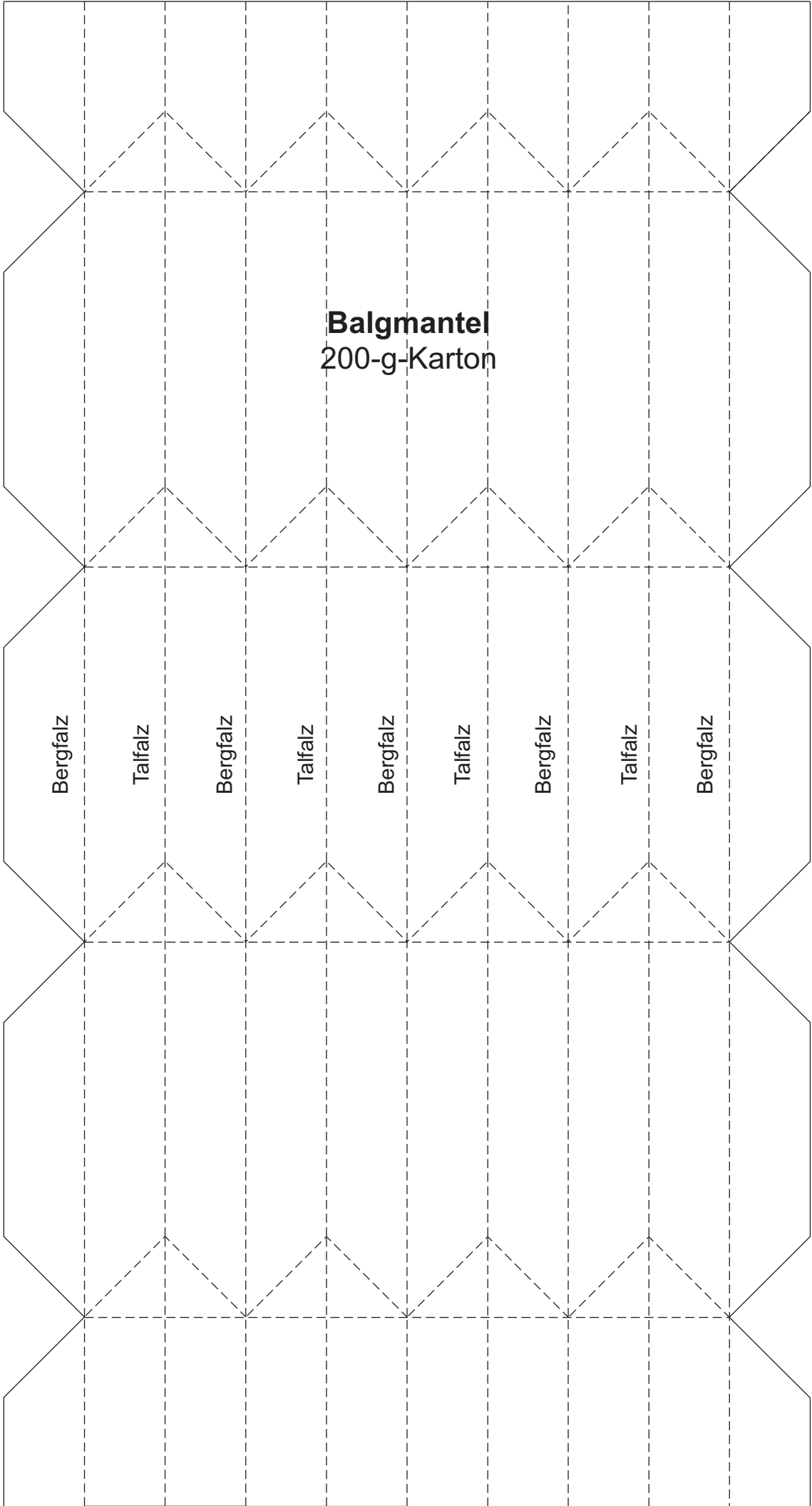
Raketen, Fallschirme, Hubschrauber  
und Flugzeuge selber bauen

© 2013  
AT Verlag, Aarau und München  
ISBN 978-3-03800-707-4

# Rampen-Rakete

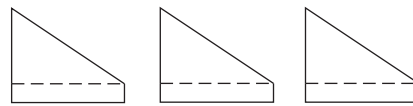
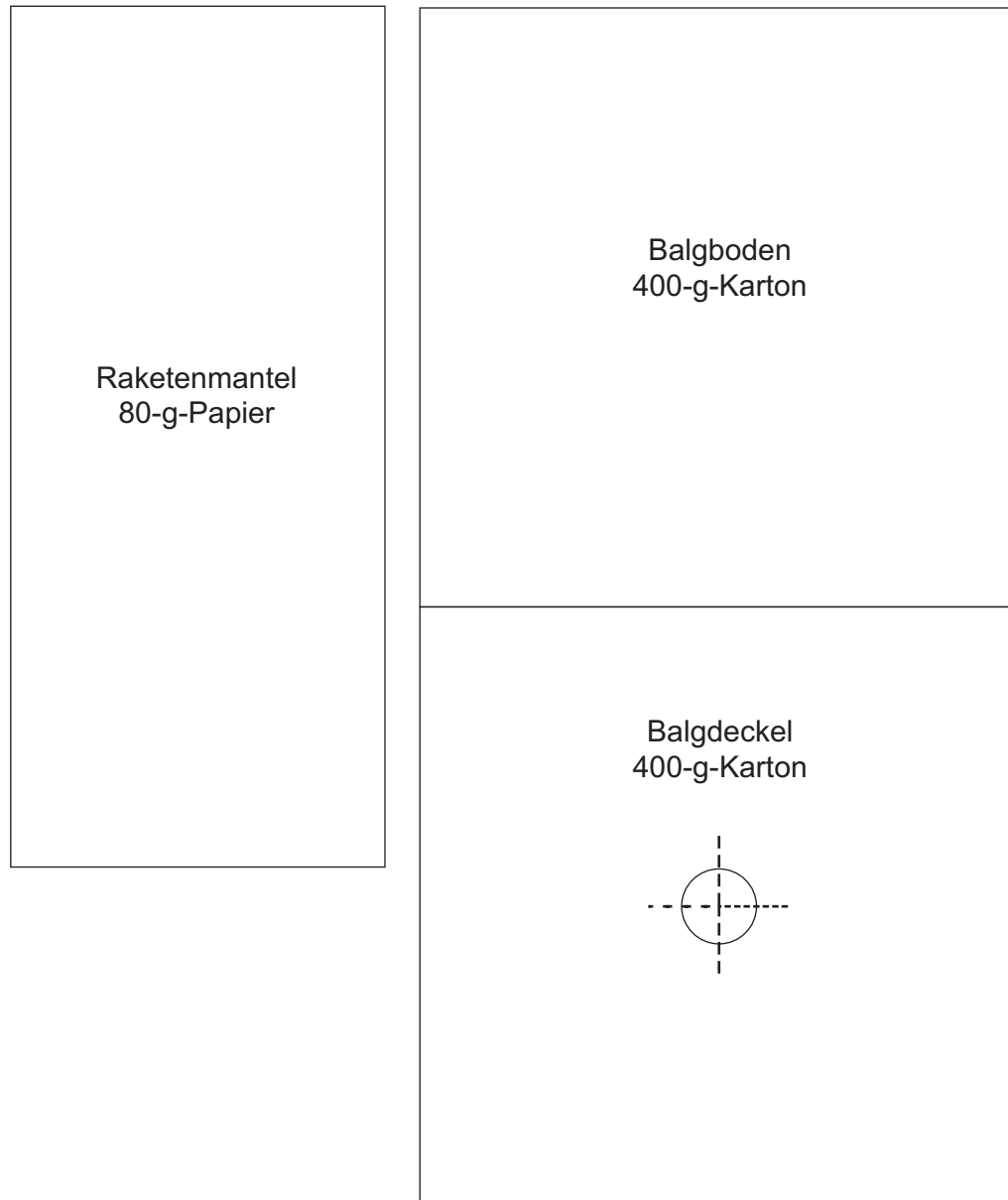


# Blasebalg-Rakete



# Ausschneideteile Blasebalg-Rakete

## 400-g-Karton und 80-g-Papier

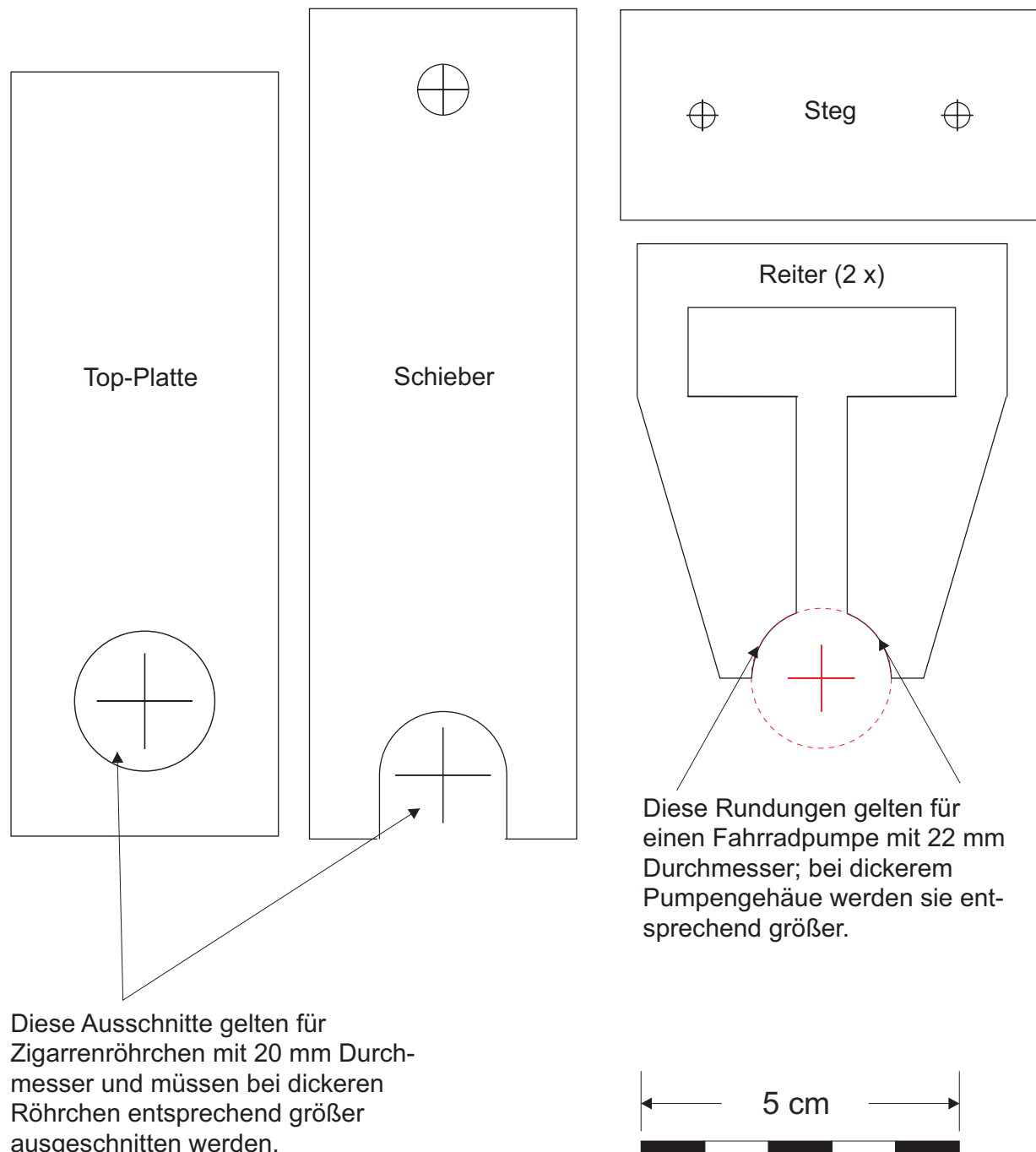


Finnen  
80-g-Papier



# Wasser-Luft-Rakete (1): Startrampe

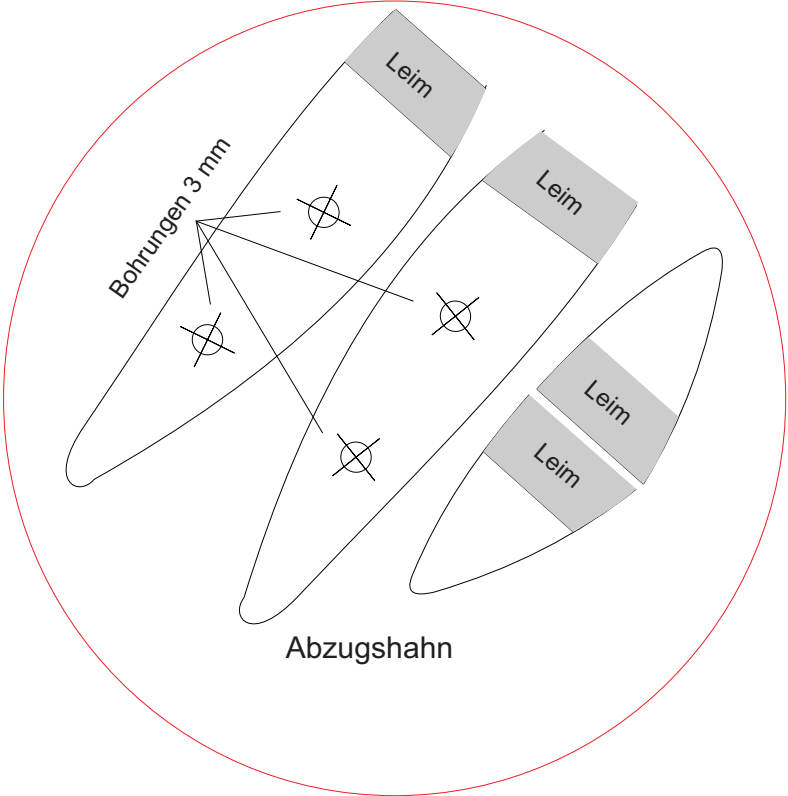
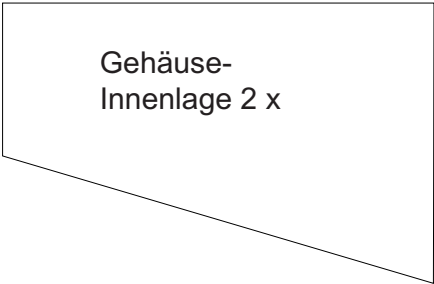
Alle Teile aus 8-mm-Sperrholz

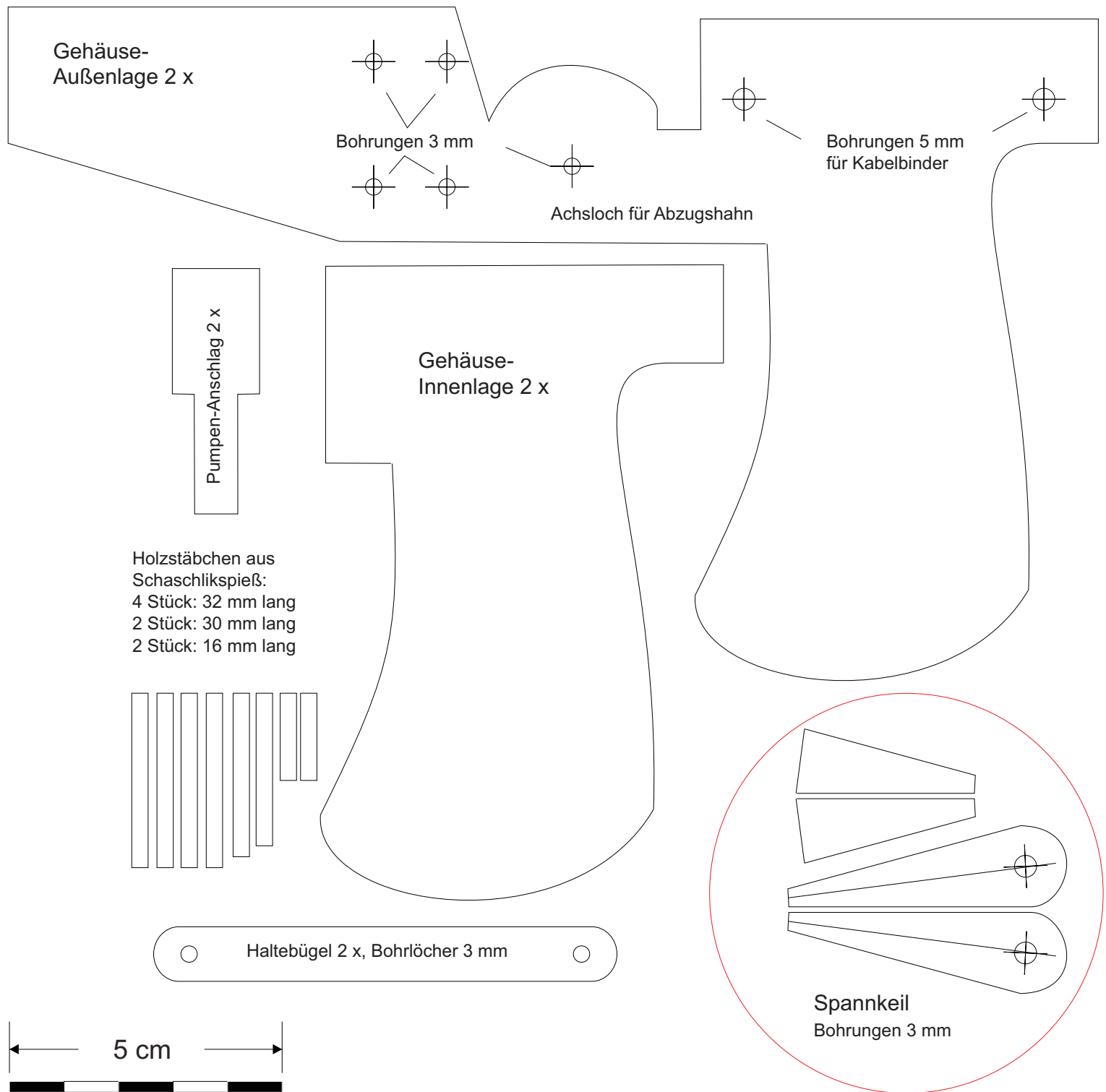




# Wasser-Luft-Rakete (2): Startpistole

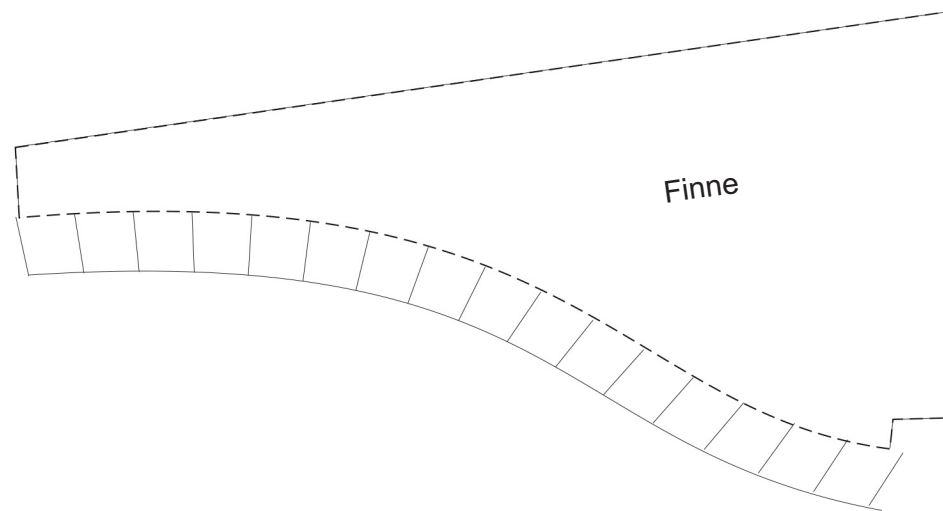
Alle Aussägeteile  
aus 4-mm-Sperrholz





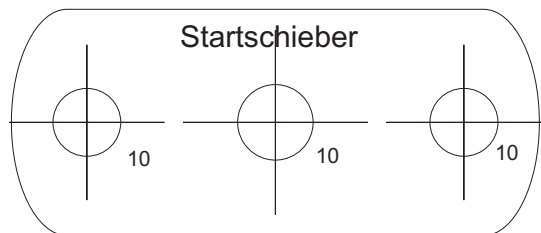
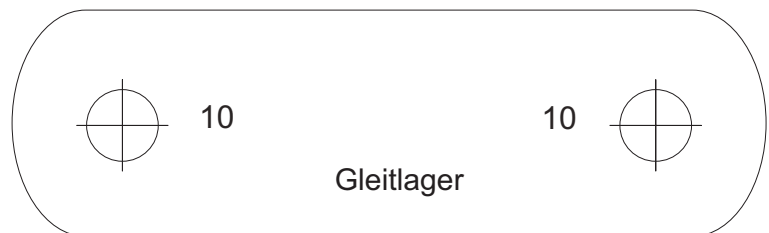
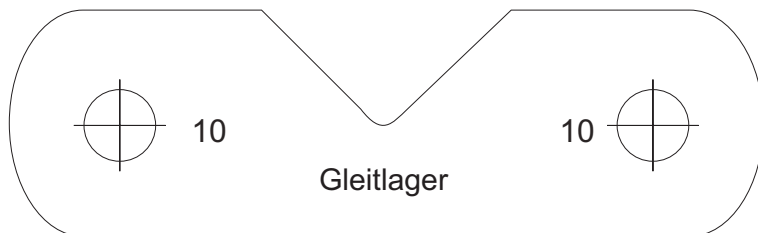
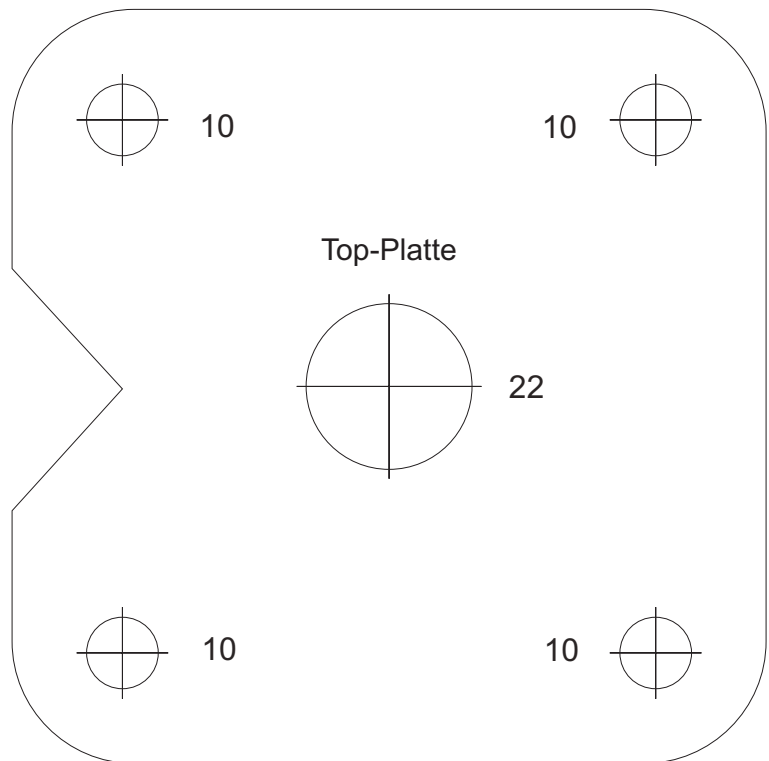
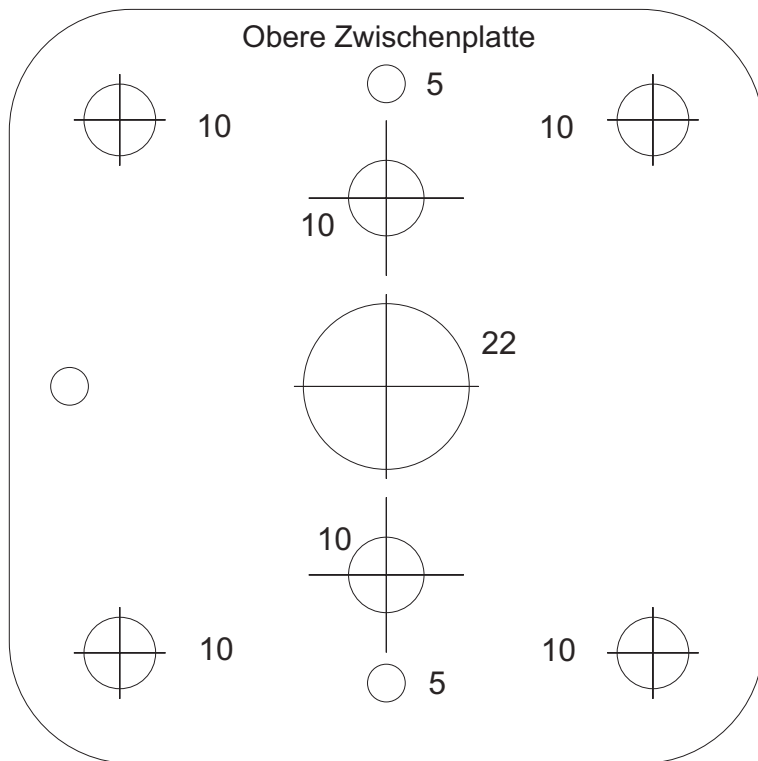
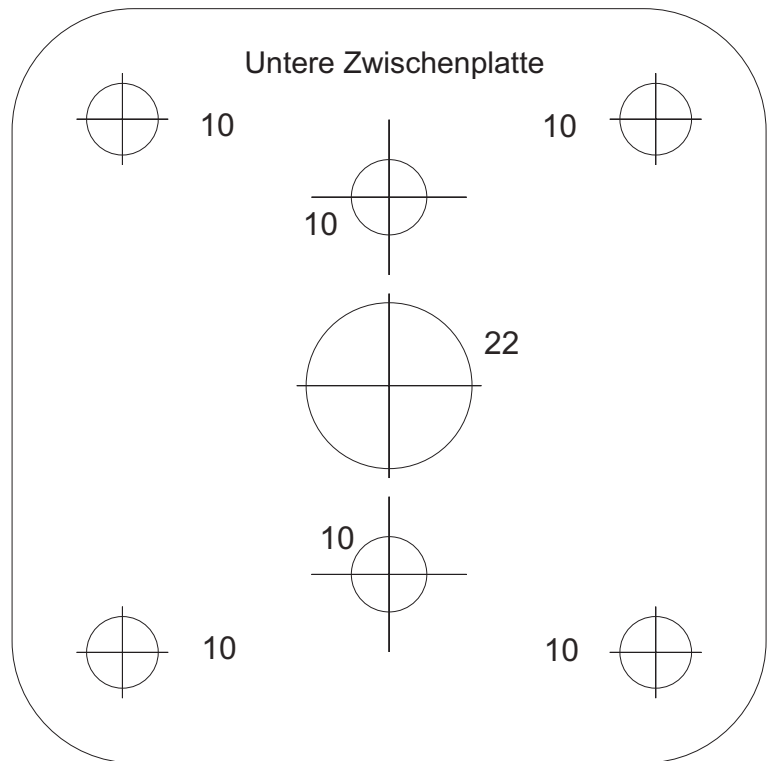
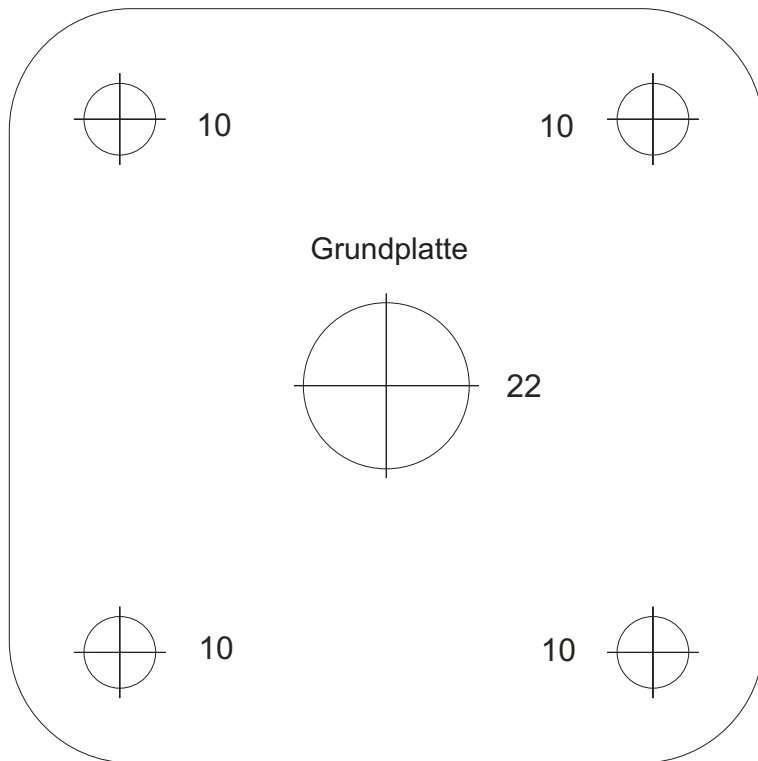


## Wasserflaschen-Rakete: Finne

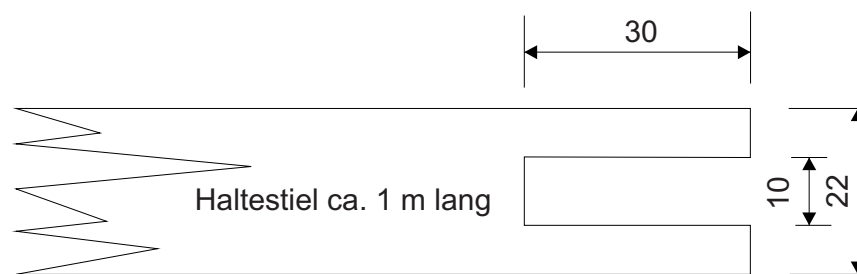
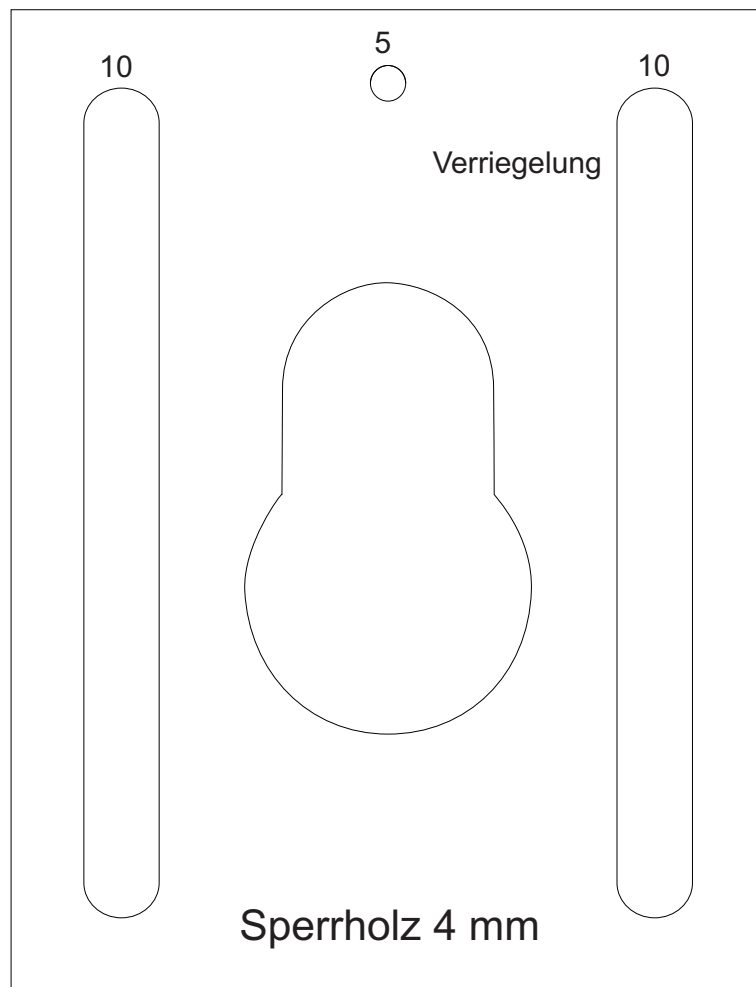




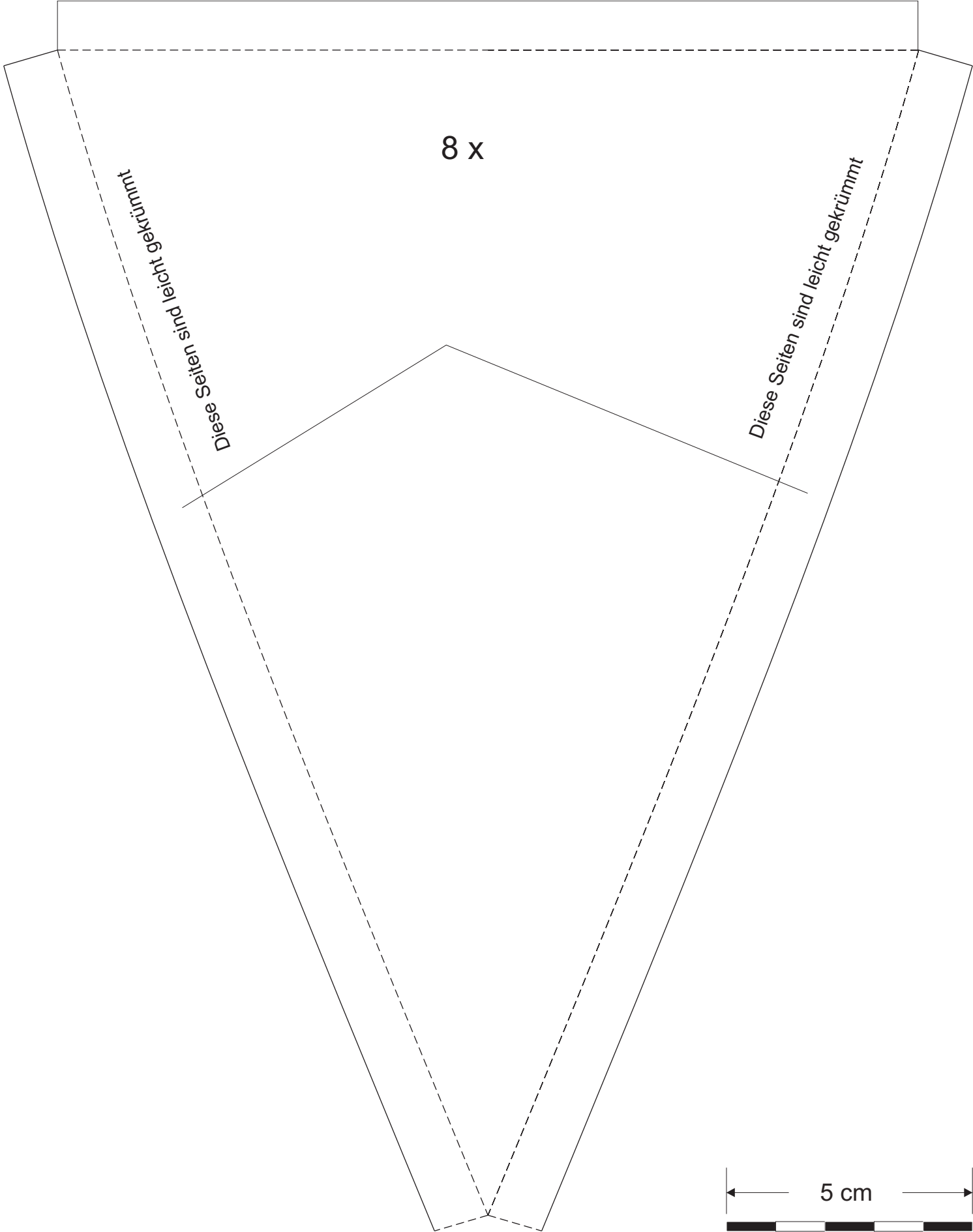
# Wasserflaschen-Rakete: Startrampe



Alle Teile aus 9–10-mm-Sperrholz

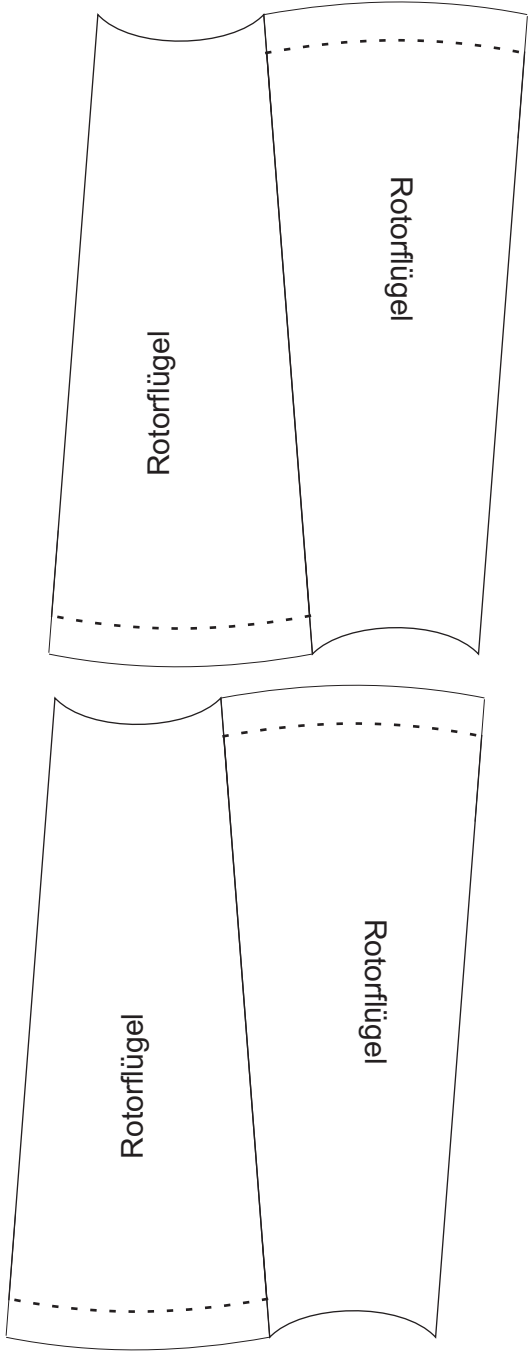


# Stoff-Fallschirm: Schirmsegment

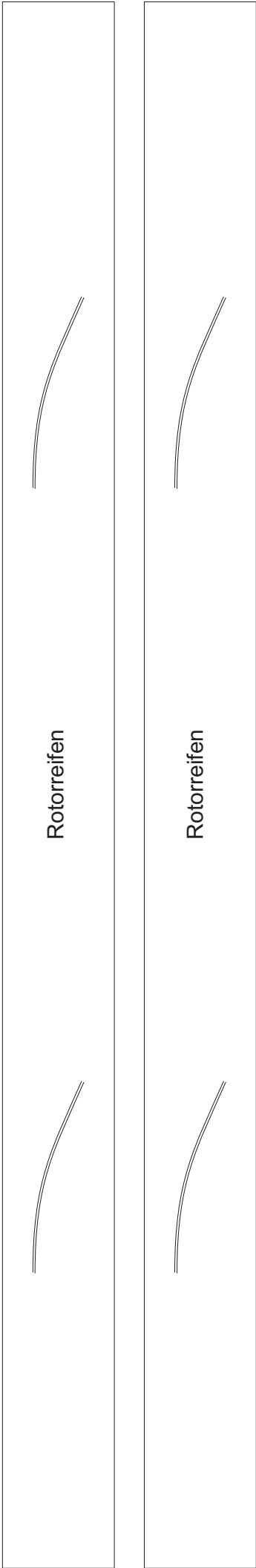


# Luftschraube

Alle Teile aus 170-g-Karton

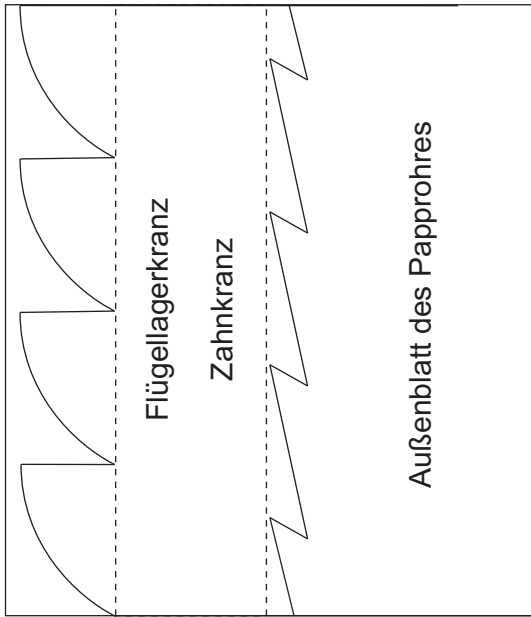
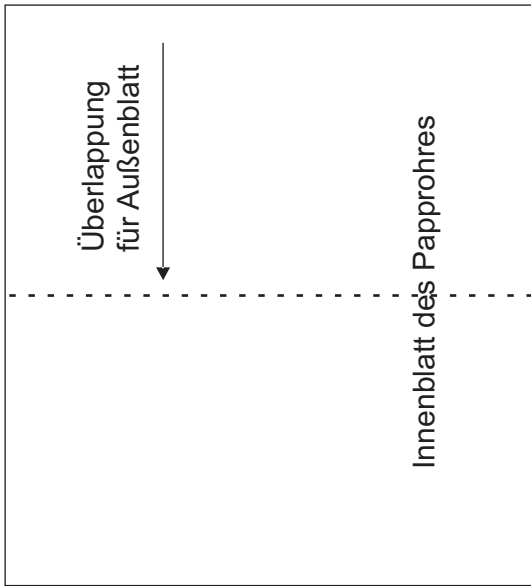
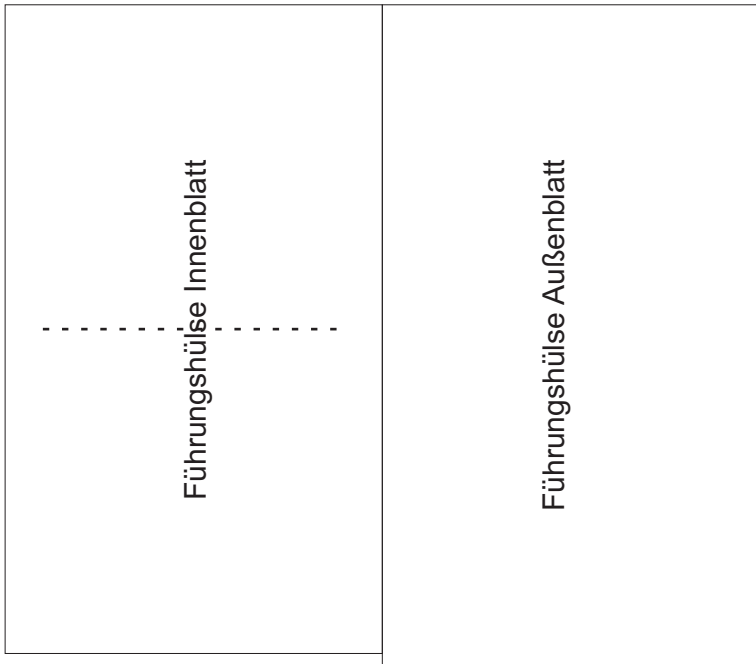


Laufrichtung  
des Kartons

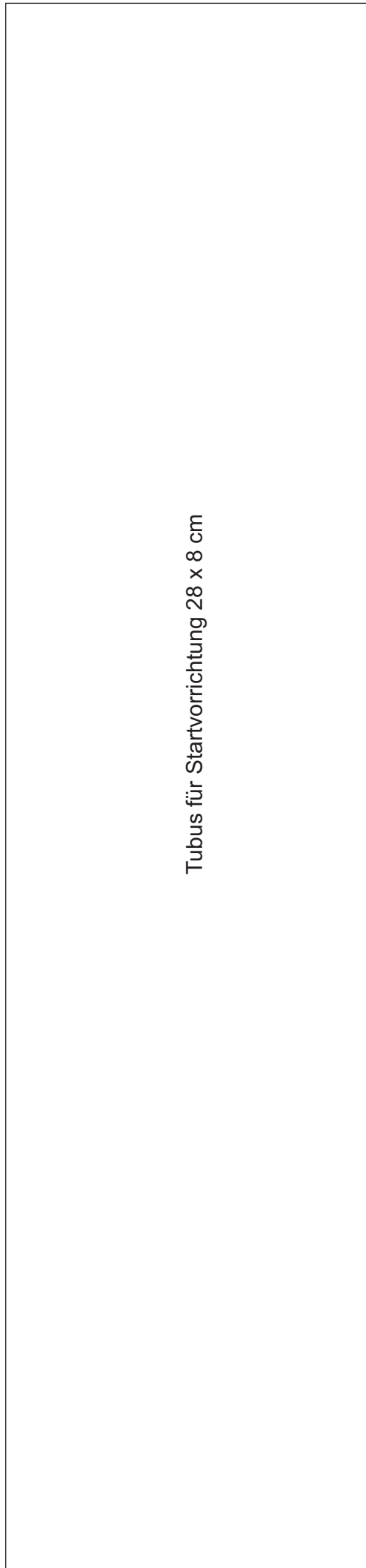


Verbindungs- lasche für Rotor- reifen	Verbindungs- lasche für Rotor- reifen	Verbindungs- lasche für Rotor- reifen	Verbindungs- lasche für Rotor- reifen
--	--	--	--

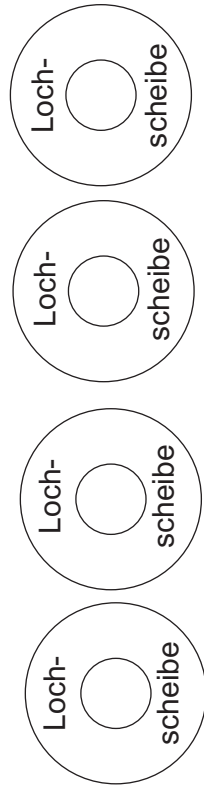
Alle Teile aus 240-g-Karton



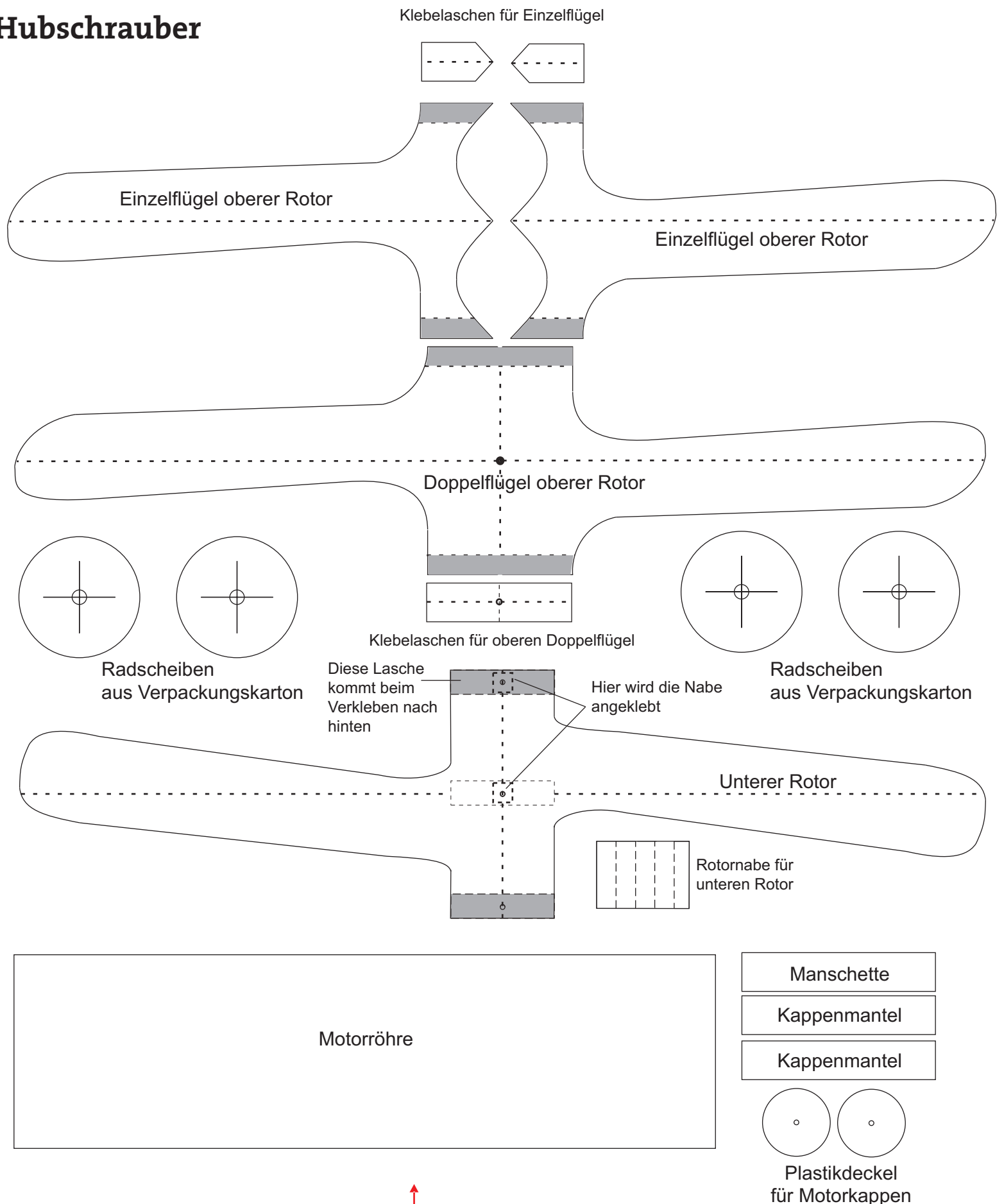
Laufrichtung  
des Kartons



Tube für Startvorrichtung 28 x 8 cm



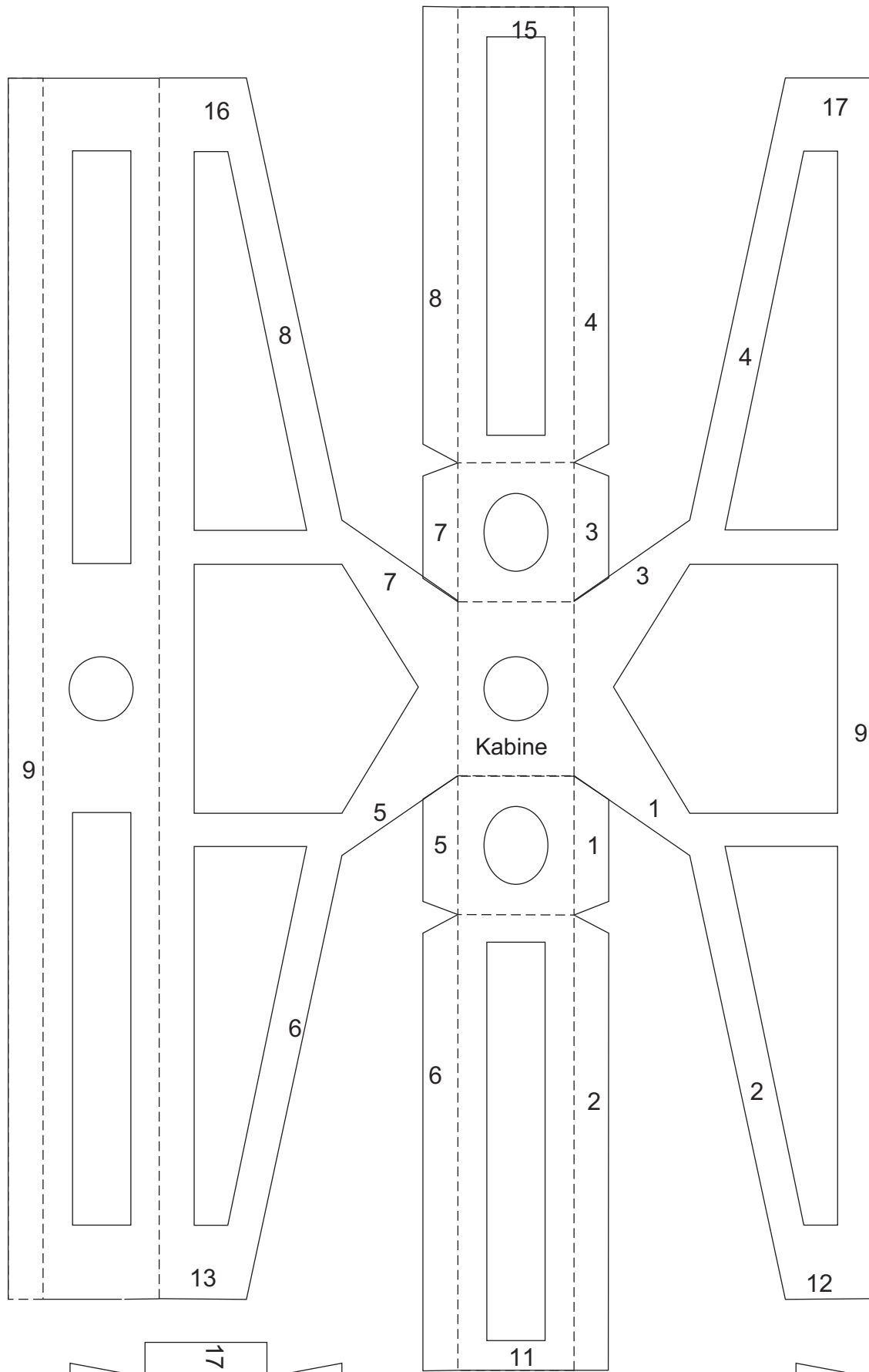
# Hubschrauber



↑  
Laufrichtung des  
Kartons beachten  
↓

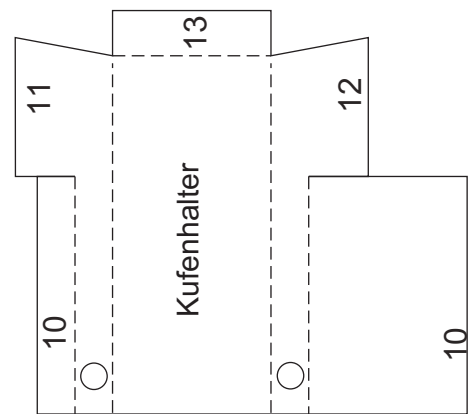
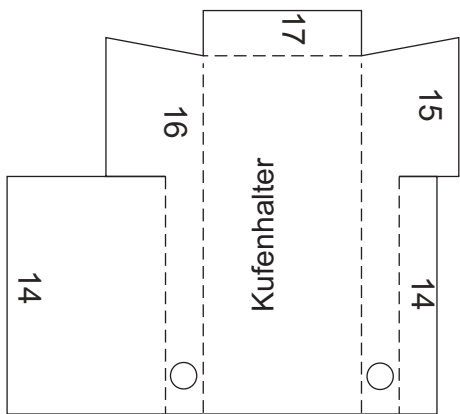
Alle Teile außer Radscheiben  
und Motorkappen aus 240-g-Tonkarton



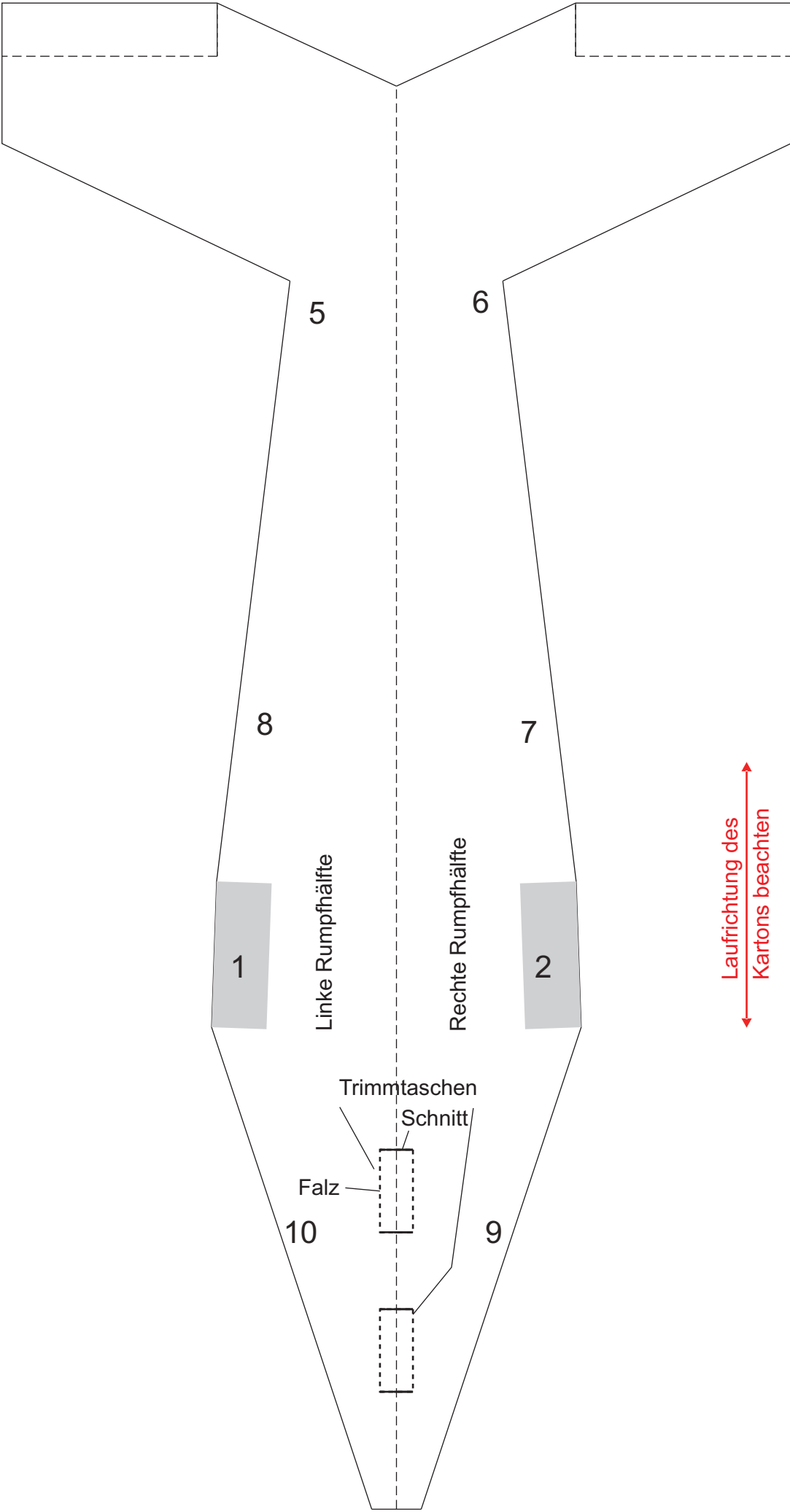


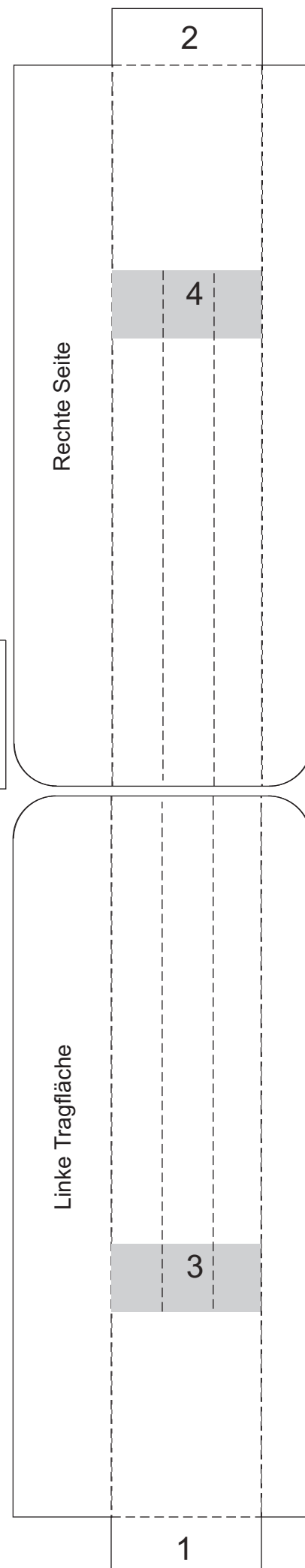
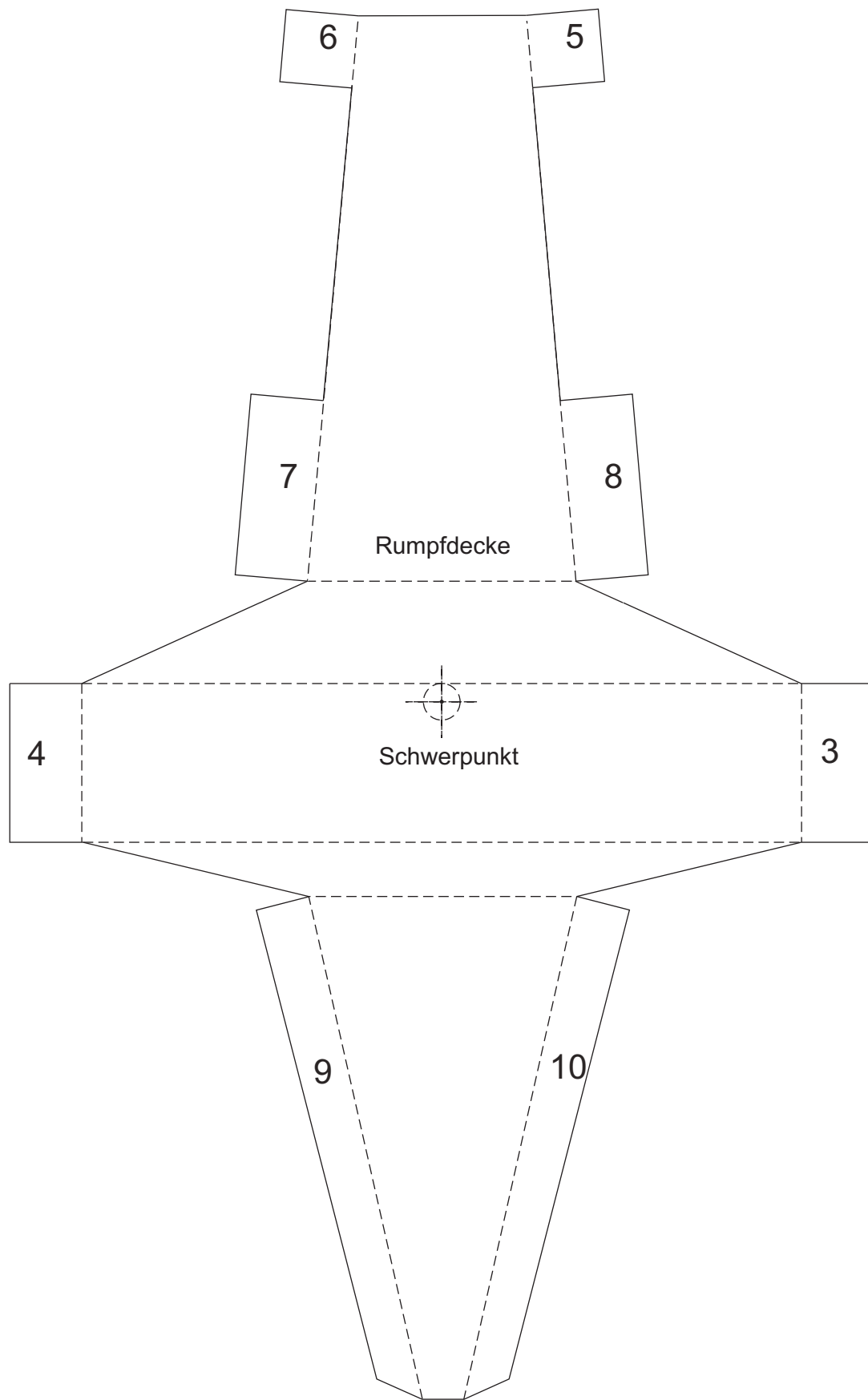
Alle Teile aus  
240-g-Tonkarton

Die Ziffern geben  
die Klebefolge an



# Saalgleiter

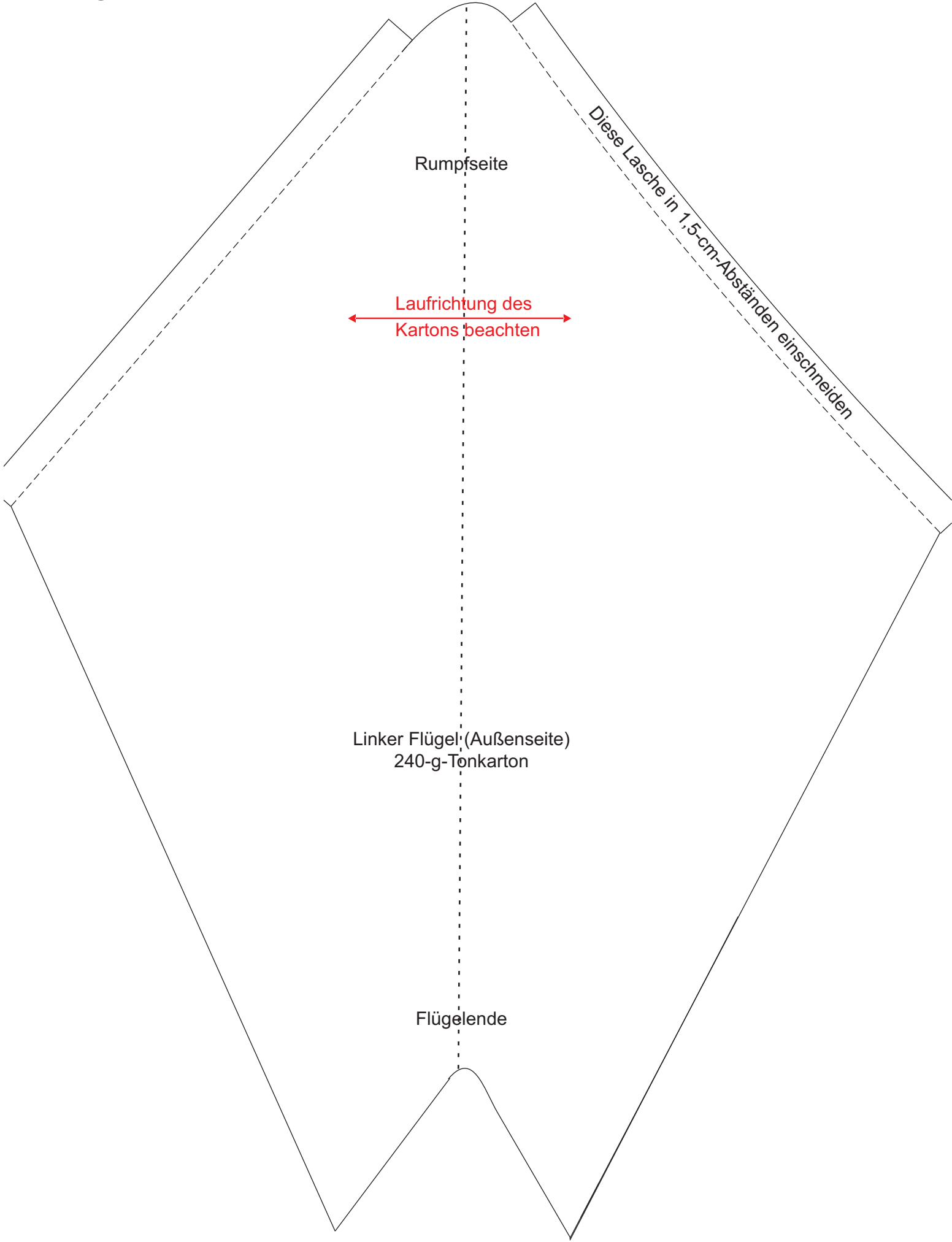


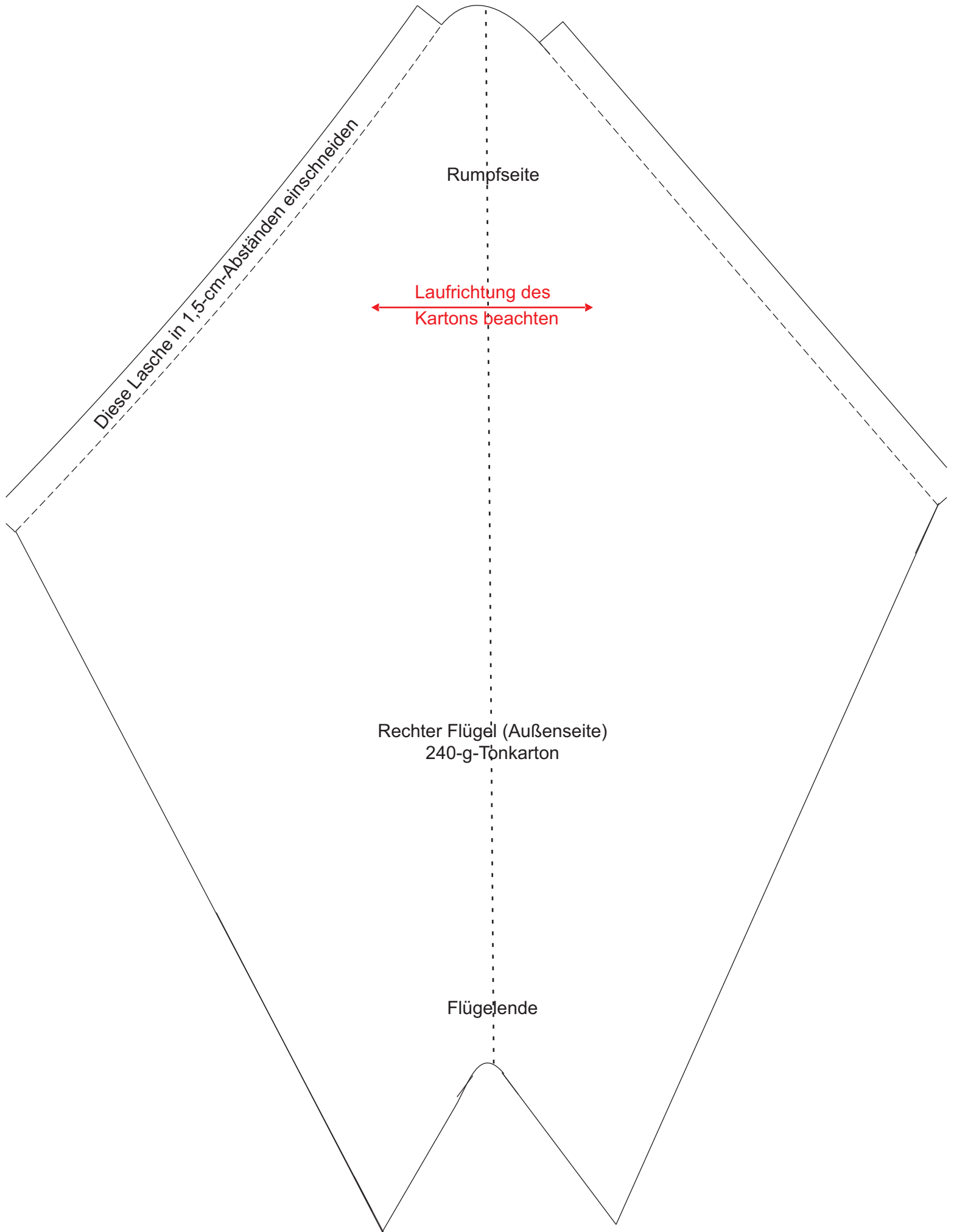


← Laufrichtung des Kartons beachten →

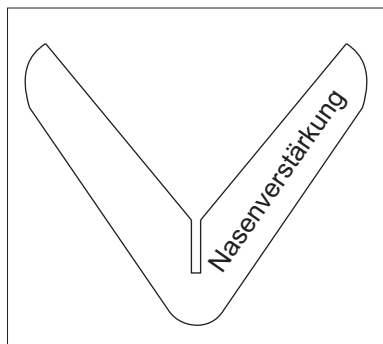
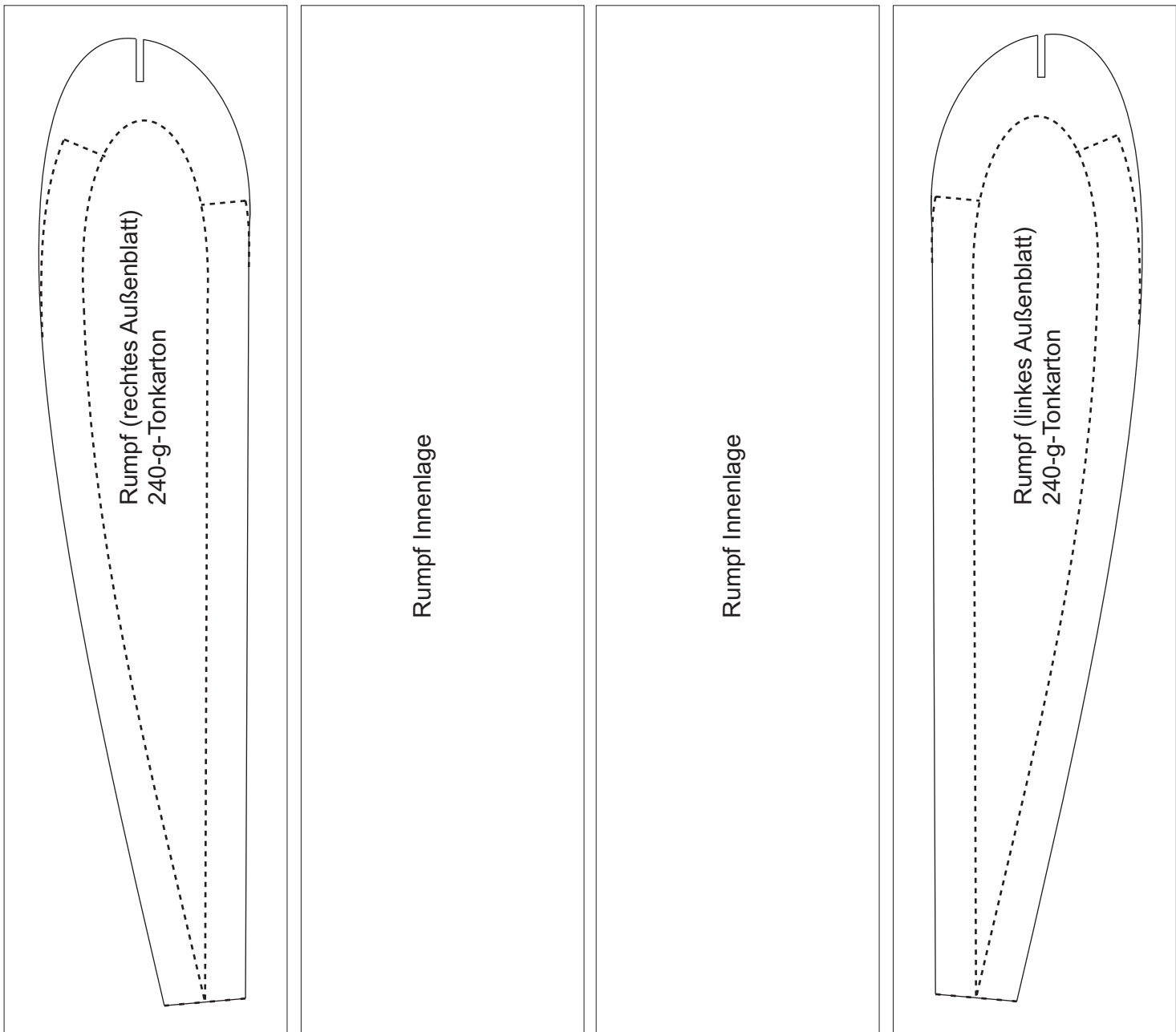


# Nurflügler





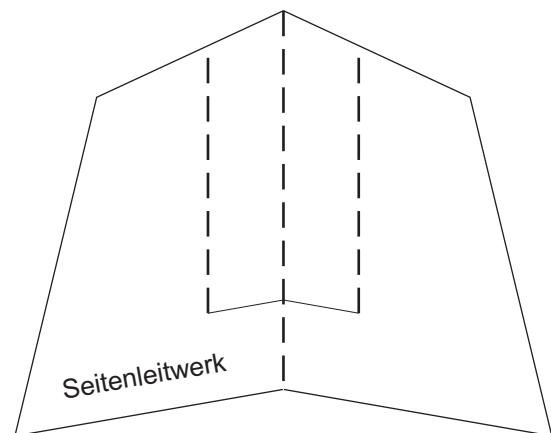
← Lafrichtung des Kartons beachten →



Nasenverstärkung

Nasenverstärkung

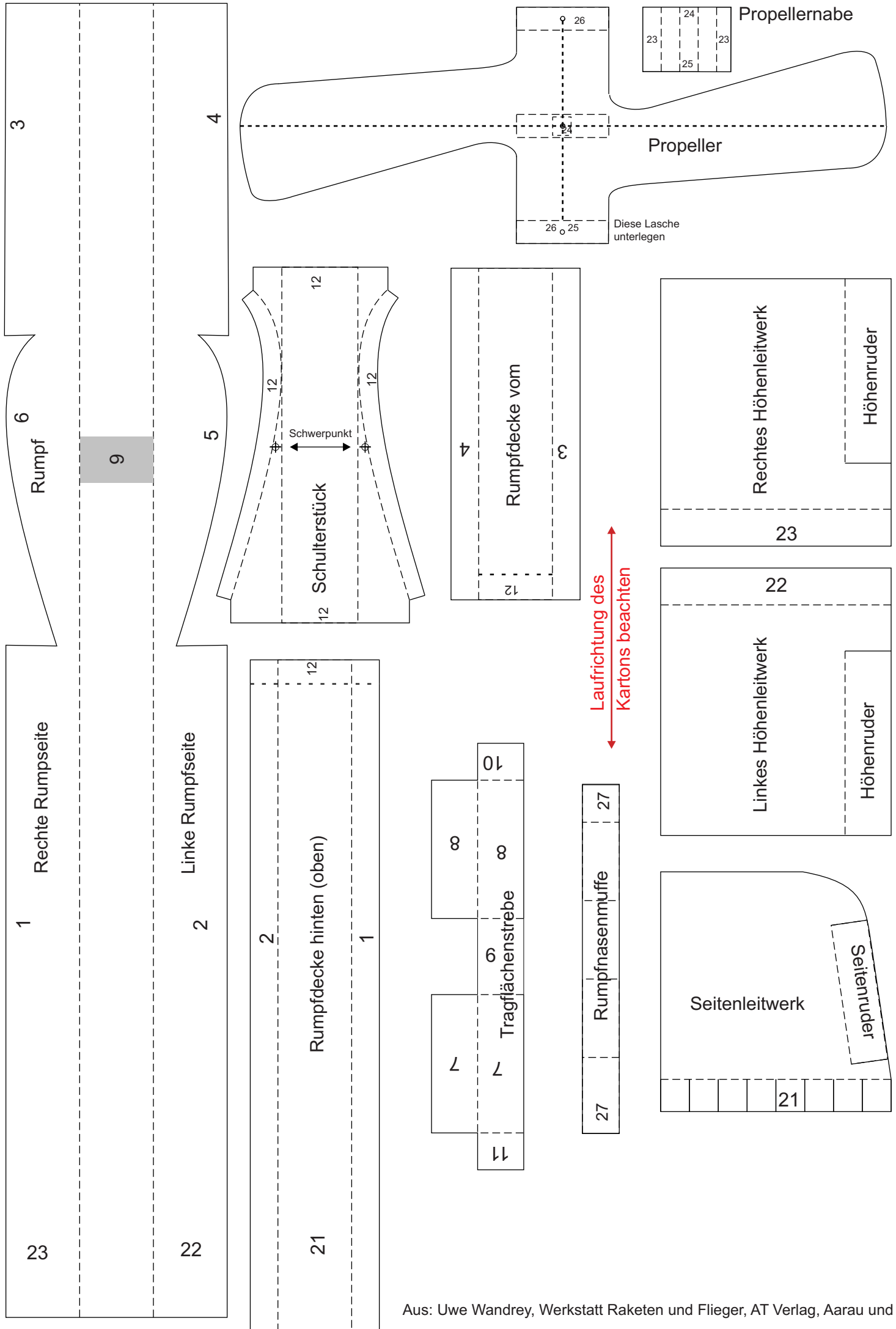
Nasenverstärkung

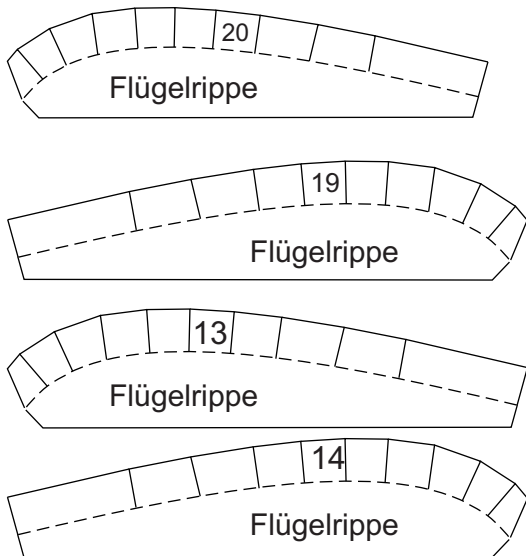
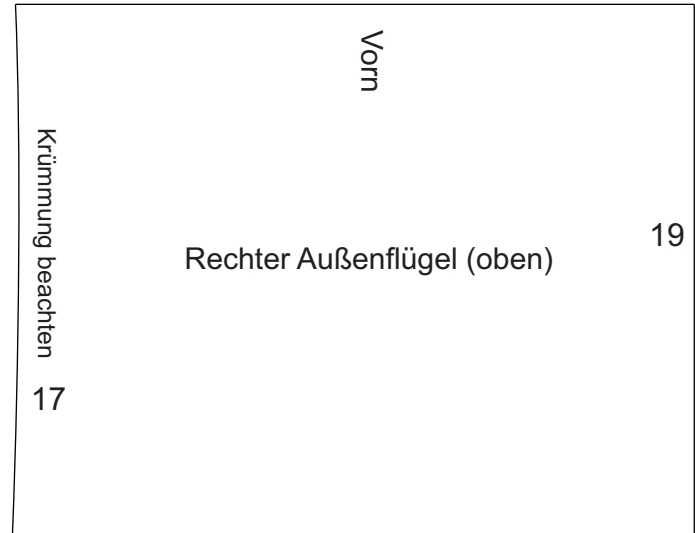
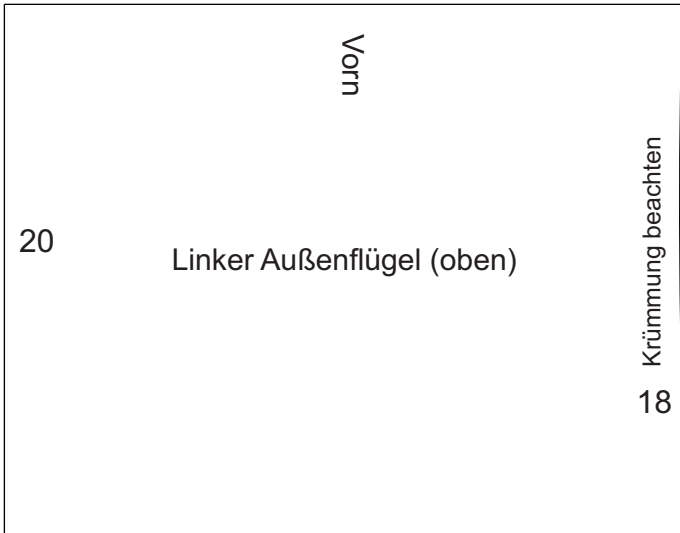
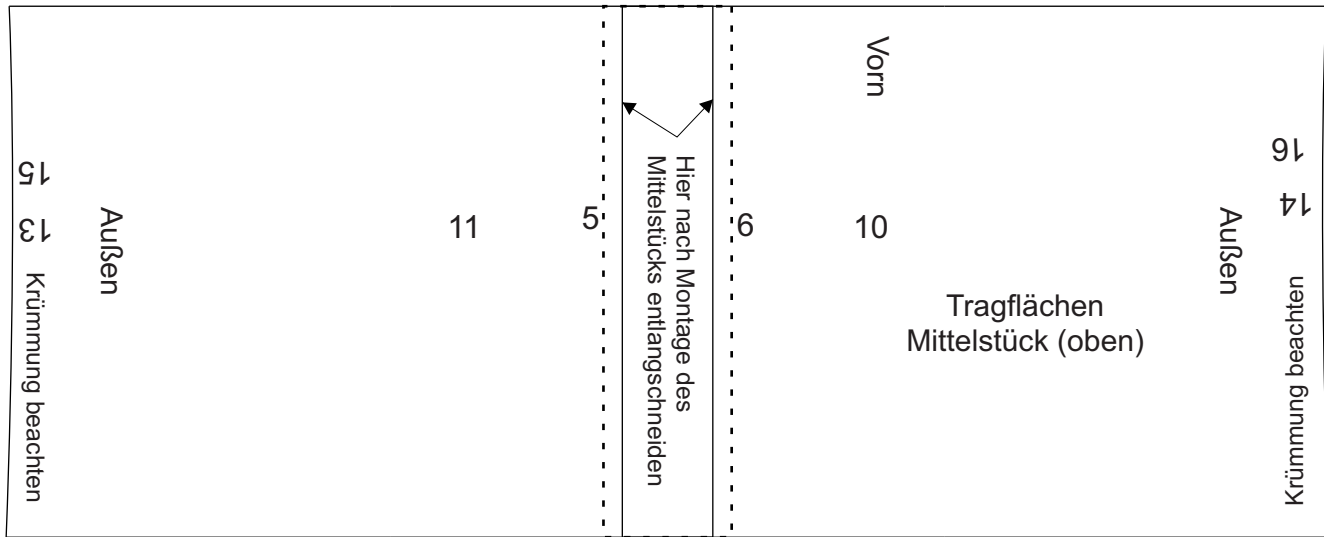


Seitenleitwerk



# Propellerflieger





Laufrichtung des Kartons beachten

